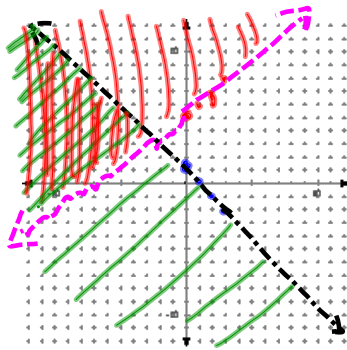
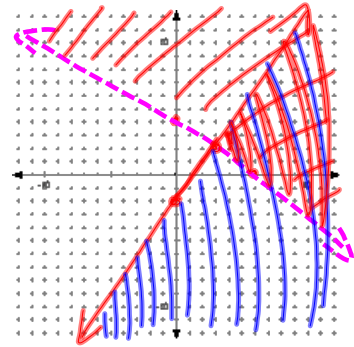


3-3 Graphing a System of Linear Inequalities

ex 1:
 $y > x + 5$
 $y < -x + 1$

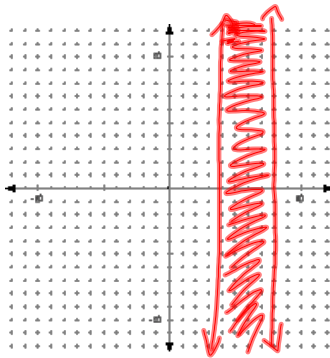


ex 2: $\begin{pmatrix} 0, 4 \\ 6, 0 \end{pmatrix}$
 $2x + 3y > 12$
 $-3y \geq 6 - 4x$
 $y \leq -2 + \frac{4}{3}x$

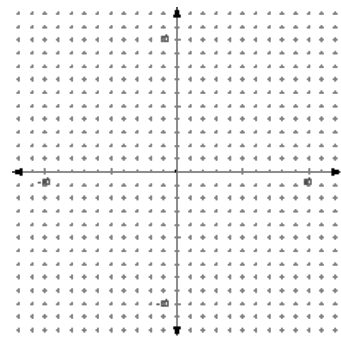


ex 3:
 $4 \leq x \leq 8$

$x \geq 4$
 AND
 $x \leq 8$

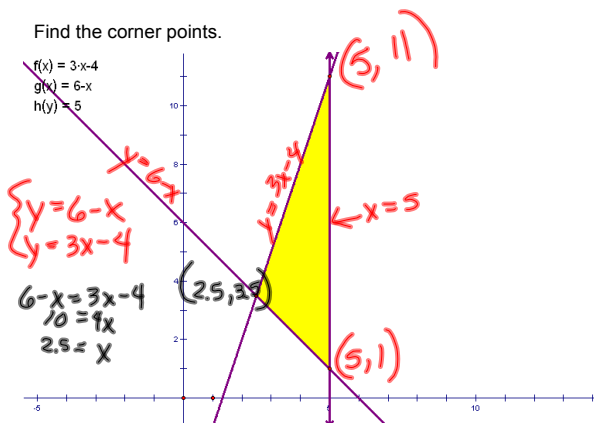


Do:
 $y \leq 3x - 4$
 $y \geq 6 - x$
 $x \leq 5$



Find the corner points.

$f(x) = 3x - 4$
 $g(x) = 6 - x$
 $h(y) = 5$

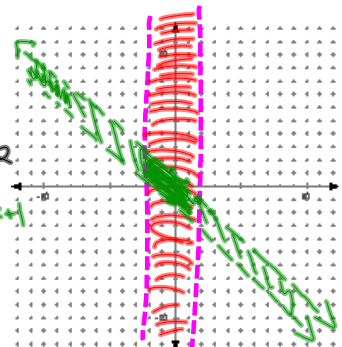


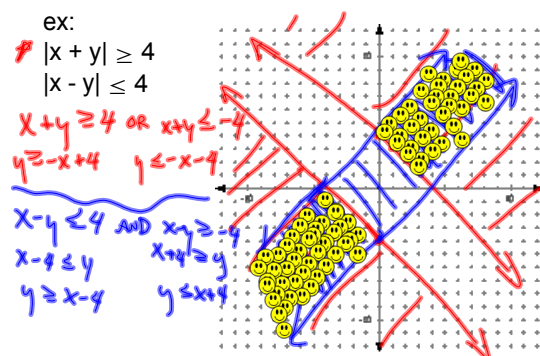
ex:
 $|x| < 2$
 $|x + y| < 1$

$x < 2$ AND $x > -2$

$x + y < 1 \rightarrow y < -x + 1$

$x + y > -1$
 $y > -x - 1$





HW

p126 12, 15, 17, 20, 21, 24, 28